



Setting up your Total Body Photography Studio

# DermEngine | Getting Started

We provide a comprehensive setup package designed to equip you with everything you need to get started with your total body photography services.

## Required Items

- DermEngine Account
- DermEngine Mobile App (from App Store or Google Play Store)
- Imaging Space
  - 2.5 x 1.5 meters (8 x 5 ft)
  - Patient should have 30 cm (1 ft) distance from the backdrop
  - Imaging backdrop or blank wall
- Digital Dermoscope (ie MoleScope)
- Smartphone/Tablet
  - iOS devices - iPhone, iPad
    - iPhone X or newer
    - Most recent iOS version
  - Android Devices
    - Samsung Galaxy S9 or newer
- Computer
  - Mac OS
    - Mac OS X High Sierra (10.13) or newer operating system
  - Windows
    - Windows 10
- Wi-Fi (10 Mbps download and upload)
- Patient gown (optional)

## Resources

Your patients are an essential part of your practice. We're here to provide you with the resources you need to ensure your patients are educated and comfortable throughout their imaging session.

- [Patient Video: What Is Total Body Photography?](#)
- [What To Expect During Your TBP Session Brochure](#)
- [General Skin Check Brochure](#)
- [Promotional Images & Banners](#) (for website or in-clinic)



## Imaging Background Colors

| Recommended                       | Not Recommended         |
|-----------------------------------|-------------------------|
| Teal<br>Light/Medium Blue<br>Gray | Black<br>Any Dark Color |

# Total Body Photography | Imaging Tips

**Background** | Use the same **neutral, non-reflective (matte)**, and **pattern-free background** for all imaging sessions to help ensure that DermEngine's lesion identification algorithms work to the best of their ability.

**Lighting** | In addition to using the recommended polarized OptimaLight, it is important that your imaging room offers **uniform, ambient lighting**. A simple step to help ensure this is to use the same lighting system (ie same room, same intensity) for all patients.

**Camera** | Keep the **camera parallel** to the body part you are imaging to ensure all lesions are clearly captured; angled images may result in missed spots within follow up images. To ensure the image is in focus, you should **tap the screen** to **focus** before imaging. You should also configure your camera settings to **HDR is turned off** and the format is most compatible. And of course, the **camera lens** must be **cleaned** prior to image to avoid blurry images.

**Patient Positioning** | Position the **patient approximately 30 cm (1 ft) away** from the backdrop during the imaging session to minimize shadowing. The distance from which you capture your patient's total body images will depend on the type of camera your practice intends to use.

**Body Part Visibility** | When imaging, you are encouraged to use the provided template to ensure that the photos are captured from the **correct distance** and position while minimizing the visibility of other body parts or foreign objects.

**Follow Up Imaging** | We recommend using DermEngine's **Ghost Template** which creates a silhouette of the patient's previous image to help produce consistent poses and imaging distance.

**Imaging Soles** | Have the patient keep their feet close together while they:

- Lay flat on a bed
- Sit on a chair with their legs facing outwards resting on a stool
- Kneel backwards on a stable chair

## Training

[DermEngine Resources Page](#) | Our step-by-step videos cover everything you need to get started with using DermEngine's Total Body Photography features. This page also includes Cheat Sheets, Pose Guides and Patient Materials.

**Support** | Your Customer Success Team is always here to support you! If you ever have any questions, email us directly or contact [training@metaoptima.com](mailto:training@metaoptima.com).

# DermEngine | Recommended Items

## OptimaLight

The latest in our lineup of support tools, OptimaLight is designed to offer a bright and even lighting solution for your total body photography sessions, while maintaining the portability and maneuverability associated with smartphone imaging.

- Cross-polarized lighting
- Compatible with most smartphone models
- True color imaging
- Bright and uniform lighting



## Backdrop & Floor Mat

Our backdrop assists in providing a consistent imaging experience that's optimal for DermEngine's award-winning total body photography algorithms. Included is a detachable floor mat that helps patients position themselves throughout the imaging process for simplified pose transitions.

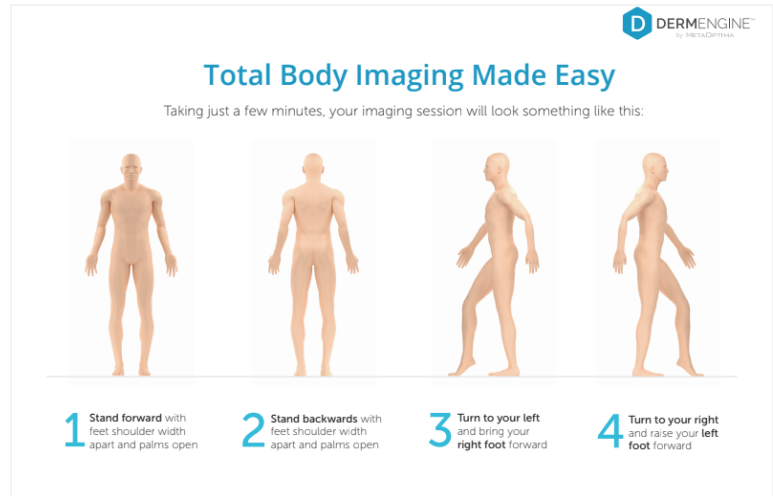
- Back drop: 220cm x 150 cm
- Floor mat: 150 cm x 150 cm
- Optimized for lesion mapping & matching algorithms
- Foot placement for each position
- Includes carrying case
- Easy to clean



# Poses Poster

Our poses poster helps guide your patients through their total body photography session so they know how to do the proper poses.

- 61 x 91cm (24" x 36")
- Two pose options based on your practice's needs
- Helpful step by step guide complete with examples



# DermEngine | Streamlining Your Daily Practice

In order to promote optimized workflows, DermEngine users are organized into three categories complete with respective responsibilities: Non Clinical, Clinical and Physician.

## Non-Clinical User

(Practice Managers, Receptionists, Schedulers)

The primary duties of a Non-Clinical User will be to customize DermEngine to their practice's unique needs. In the majority of cases, they will be identified as the champion(s) and the "train the trainer" approach is applied.

## Clinical Assistant

(Nurses, Medical Assistants, Melanographers/Photographers)

The duties of Clinical Assistant are divided into two types: clinical imaging and total body photography; along with two patient subtypes: new and existing.

## Physician/Provider

(Dermatologists, Nurse Practitioners, Physician Assistants)

In order to take advantage of the Physician's time and knowledge, their responsibilities will focus on providing the final decision regarding a patient's case.

# Clinical Workflows

## New Patients

### Total Body Photography (TBP)

Upon the patient's first visit, the Clinical Assistant will explain the different body poses and imaging process to acquire baseline total body images of the patient. Body Poses can be customized by order, body part/grouping and preference.

#### **TBP Imaging: 10-15 min**

The patient will be brought into the imaging room by the Clinical Assistant and guided on the process and poses they will perform. The DermEngine app will guide the Clinical Assistant sequentially through the poses for image acquisition.

#### **Physician Exam- 5-10 min**

The Physician will perform a full body skin examination of the patient. The Clinical Assistant will review the total body photography images in DermEngine (web platform or mobile app) and select the lesions the physician has identified for mole mapping and dermoscopic imaging. DermEngine will assign a spot number to each selected lesion for reference.

#### **Dermoscopic Images 5 min**

Dermoscopic imaging is performed by a Clinical Assistant and assigned to the identified lesion from the TBP image for review by the Physician. Clinical Assistant may assist with documenting additional details in the Spot Note, Visit Note, *etc.* for future reference..

### Dermoscopic and/or Clinical Imaging only (No TBP)

Clinical Assistant will review the imaging process with the patient and mark any spots of concern. The Physician will review these spots and mark any additional spots requiring dermoscopic imaging during their exam. The Clinical Assistant will add spot(s) to DermEngine and capture clinical and dermoscopic images for current and future review. Spots and associated images can be assigned to lesions identified in existing and future TBP images.

## Existing Patients

### Total Body Photography

The Clinical Assistant will take all follow-up total body images as guided by the DermEngine mobile app. Once imaging is complete, the Physician and Clinical Assistant will review TBP images to identify, map and image new spots and existing spots with large amounts of change. The Physician will then identify additional spots for imaging and perform any necessary procedures.

### Dermoscopic Imaging only

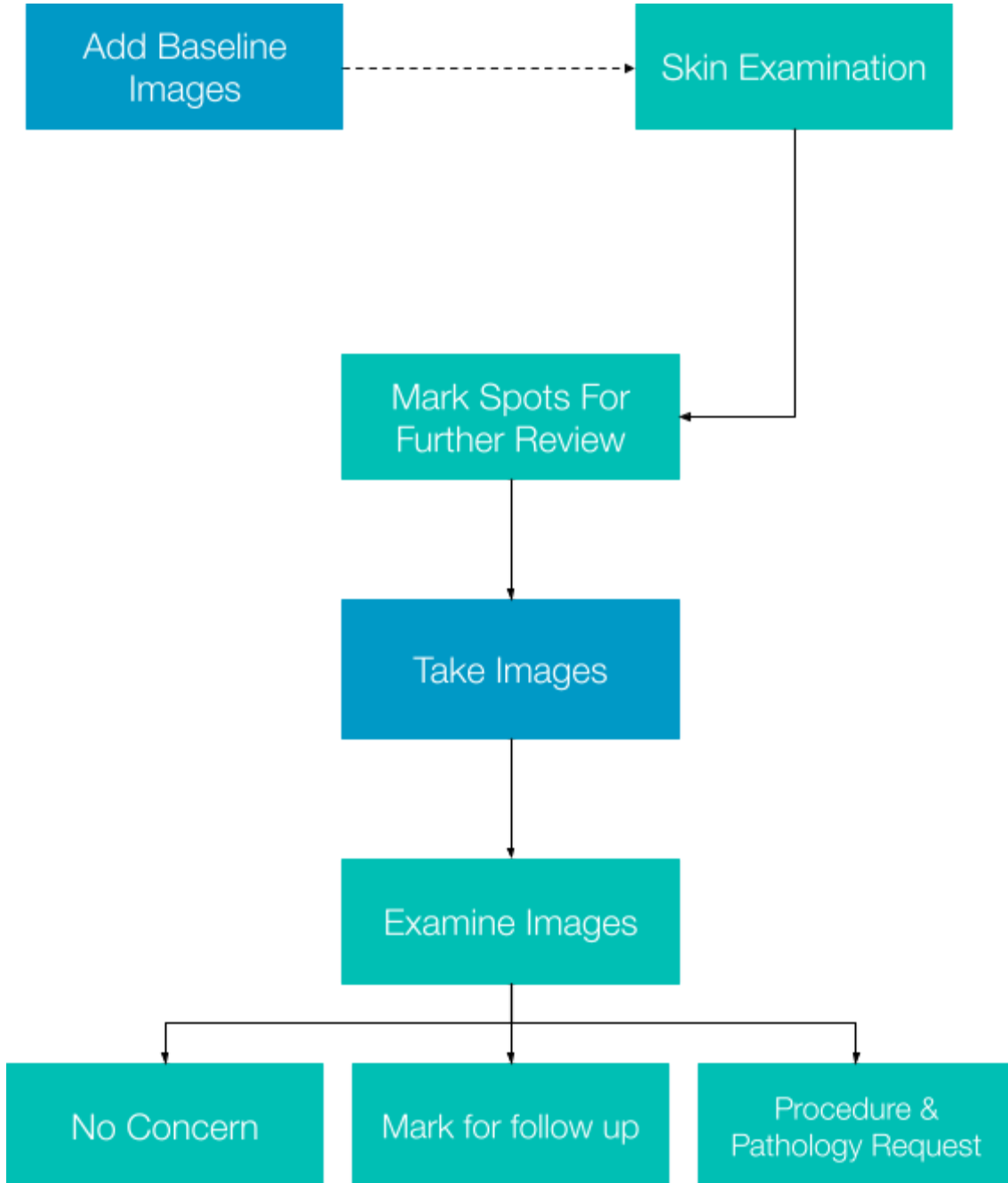
The Clinical Assistant will image any follow-up and/or new spots identified by the patient. The Physician will then perform a full body skin examination and review any previous TBP and lesion images. The Clinical Assistant will document spots for continued monitoring and/or any additional details as a Spot Note, Visit Note, *etc.* per the Physician's request

# New Patients

Clinical Assistant ■  
Physician ■

Total Body Photography

Dermoscopic Imaging





# Existing Patients

Clinical Assistant ■  
Physician ■

## Total Body Photography

## Dermoscopic Imaging

