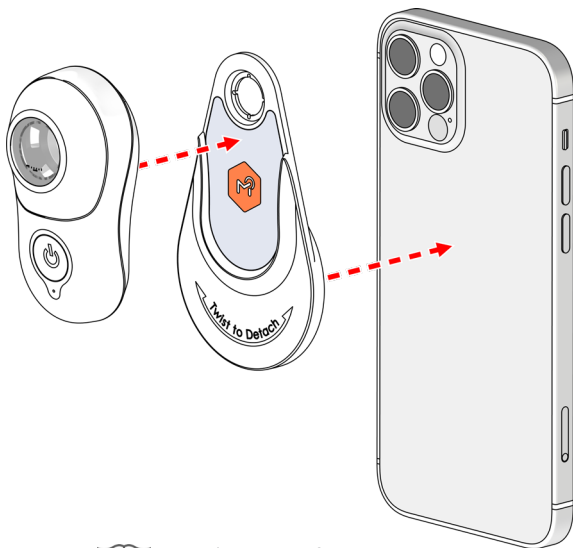




MoleScope™ II

Quick Start Guide for Universal Model

P002 - 004 - QSG
2023-06-06 V4.2



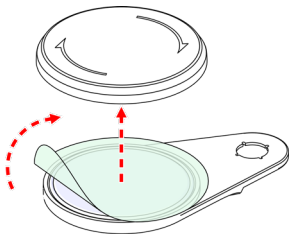
Consult Instruction for Use
www.molescope.com/molescope2



Follow instructions for use

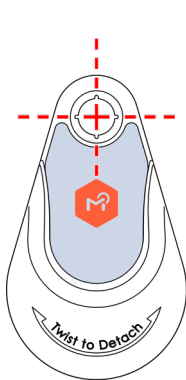
Step 1:

Twist and lift the lid to reveal the sticky pad underneath. Then peel off the protective layer from the sticky pad surface.

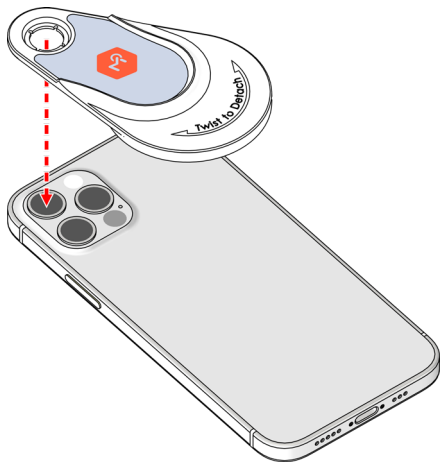


Step 2:

Clean the back of your smartphone, tablet, or device case with the provided microfiber cloth to remove any smudges, dirt or oil. Next, align the guide marks of the attachment plate with the centre of the smartphone/tablet camera and gently push to secure the plate. If your smartphone has multiple camera lenses, align the attachment with the centre of the main camera.



Attachment Plate



If the adhesion is not adequate, you have the option of attaching the attachment plate to your smartphone/tablet case that has a hard and smooth back. Avoid rubber, leather, and textured surfaces.

Step 3:

Place the MoleScope device on the attachment plate. Next, press the power button to turn on your device and gently press the MoleScope flat against the skin making sure the lesion is centered. Tap your mobile device screen to focus and take the image.



Step 4:

There is an extra cap in the box for non-contact imaging. Simply lift up the contact cap and replace with the non-contact cap if needed. When the imaging session is over, pull to remove the MoleScope device, then gently twist the attachment plate to detach it from your smartphone, tablet or case and place the lid back on the sticky pad. Do not grab and lift the attachment plate!

Make the most of MoleScope II with DermEngine

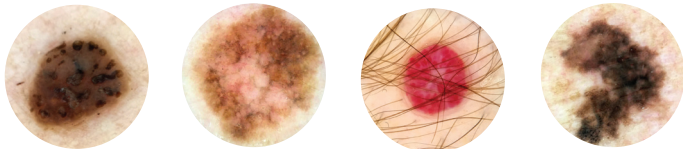
For medical professionals and care providers, MoleScope II is compatible with DermEngine, an intelligent dermatology ecosystem designed for the capturing, documentation and reviewing of skin conditions, including skin cancer.

Please contact us at info@metaoptima.com to request a demo and explore how it will facilitate the improvement of your practice.

You can add and manage your patients, capture and track their skin images, and build your own medical network while providing telemedicine and second opinion services.



Examples of high quality MoleScope II images



MetaOptima Technology Inc.
Suite 1050, 1185 W Georgia Street,
Vancouver, BC, Canada V6E 4E6
www.metaoptima.com / Tel: +1-778-328-194

EC REP

Emergo Europe
Westervoortsedijk 60
6827 AT Arnhem
The Netherlands



Australia Sponsor

MetaOptima Australia Pty. Ltd.
Level 3, 223 Liverpool Street,
Darlinghurst, NSW, 2010, Australia



UK Responsible Person

Emergo Consulting (UK) Limited,
c/o Cr360 – UL International,
Compass House, Vision Park Histon,
Cambridge CB24 9BZ, United Kingdom